

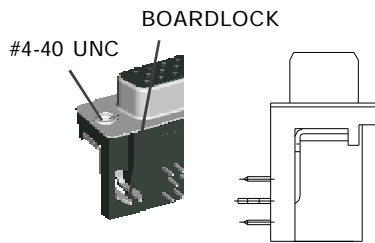
**MMI**

---

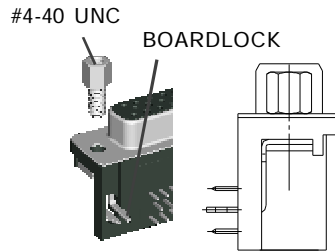
**HIGH DENSITY D-SUB  
(CRIMP TYPE)**

---

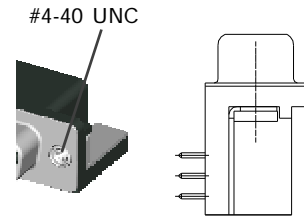
## HIGH DENSITY D- SUB 1XX SERIES MOUNTING OPTIONS



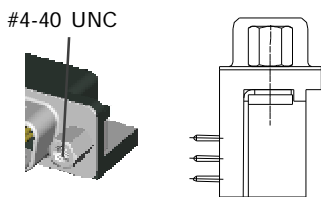
a TYPE  
WITH #4-40UNC THREAD INSERT  
GROUNDING BRACKET &  
BOARDLOCK



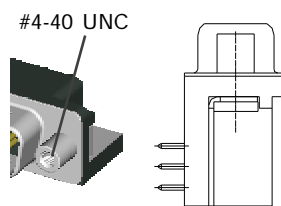
as TYPE  
WITH #4-40UNC HEX NUT  
GROUNDING BRACKET &  
BOARDLOCK



b TYPE  
WITH #4-40UNC THREAD INSERT  
GROUNDING BRACKET

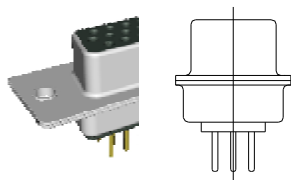


d TYPE  
WITH FIXED #4-40UNC HEX NUT  
GROUNDING BRACKET

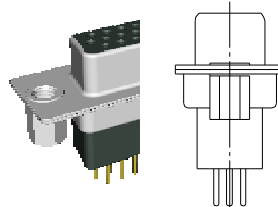


rd TYPE  
WITH FIXED #4-40UNC ROUND NUT  
GROUNDING BRACKET

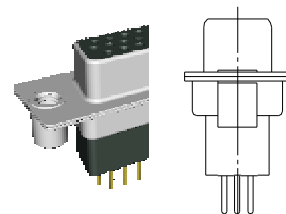
## HIGH DENSITY D- SUB 2XX SERIES MOUNTING OPTIONS



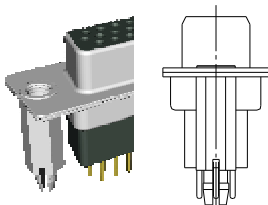
H TYPE  
WITH MOUNTING HOLE ONLY



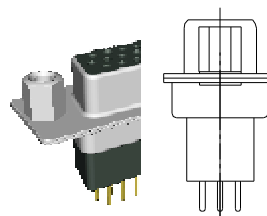
I TYPE  
WITH #4-40UNC HEX NUT  
IN THE REAR OF THE SHELL



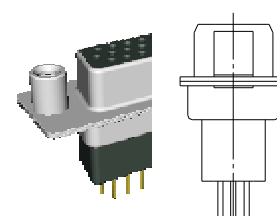
J TYPE  
WITH #4-40UNC ROUND NUT  
IN THE REAR OF THE SHELL



K TYPE  
WITH #4-40UNC IN THE REAR SHELL  
USE RIVET AS BOARDLOCK



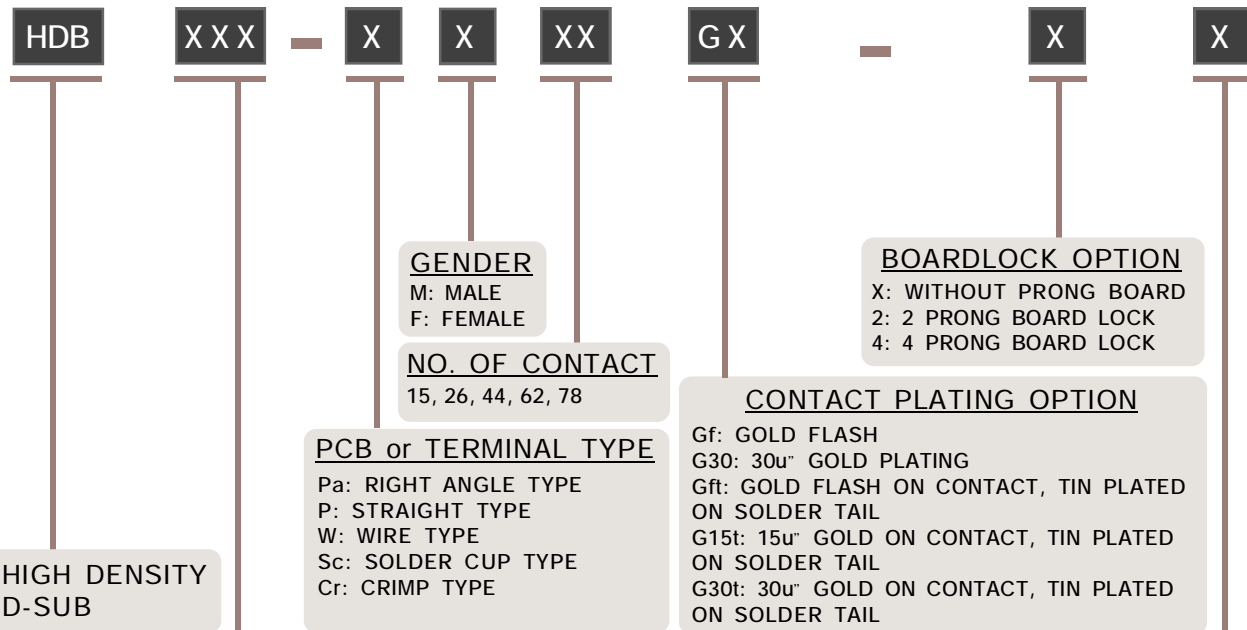
L TYPE  
WITH #4-40UNC HEX NUT  
IN THE FRONT OF THE SHELL



M TYPE  
WITH #4-40UNC ROUND NUT  
IN THE FRONT OF THE SHELL

NOTE : SOME SIZES, STYLES AND OPTION ARE NON-STANDARD, NON-CANCELLABLE, NON-RETURNABLE

# HIGH DENSITY D-SUB CONNECTOR PART NO. INFORMATION



**SERIES NO.**

1XX: RIGHT ANGLE TYPE  
-130  
-132  
-14X  
-150

2XX: STRAIGHT TYPE  
-200  
-210  
-230  
-250

3XX: WIRE TYPE  
-300: LENTH= 10.00 mm  
-310: LENTH= 13.00 mm  
-320: LENTH= 17.50 mm

4XX: SOLDER CUP TYPE  
- 400

5XX: CRIMP TYPE  
- 500

9XX: MACHINE PIN TYPE  
-900: FOOTPRINT= 9.30 mm  
-910: FOOTPRINT= 7.19 mm

**MOUNTING TYPE**

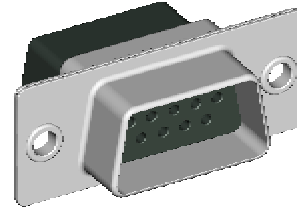
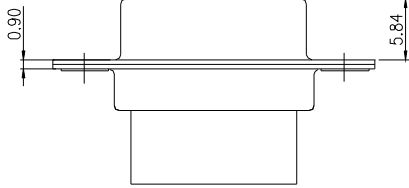
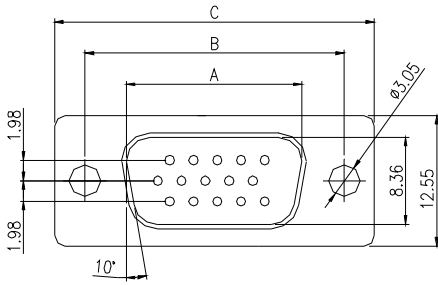
FOR RIGHT ANGLE TYPE  
a :WITH #4-40UNC THREAD INSERT GROUNDING BRACKET & BOARDLOCK  
b: WITH #4-40UNC THREAD INSERT GROUNDING BRACKET  
d: WITH FIXED #4-40UNC HEX NUT GROUNDING BRACKET  
rd: WITH FIXED #4-40UNC ROUND NUT GROUNDING BRACKET

FOR STRAIGHT TYPE  
H: WITH MOUNTING HOLE ONLY  
I: WITH #4-40UNC HEX NUT IN THE REAR OF THE SHELL  
J: WITH #4-40UNC ROUND NUT IN THE REAR OF THE SHELL  
K: WITH #4-40UNC IN THE REAR SHELL USE RIVET AS BOARDLOCK  
L: WITH #4-40UNC HEX NUT IN THE FRONT OF THE SHELL  
M: WITH #4-40UNC ROUND NUT IN THE FRONT OF THE SHELL

NOTE : SOME SIZES, STYLES AND OPTION ARE NON-STANDARD, NON-CANCELLABLE, NON-RETURNABLE

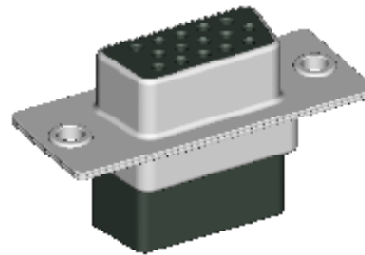
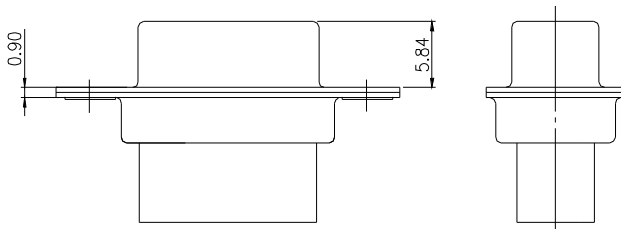
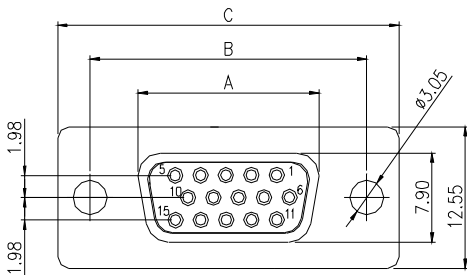
# HDB 500 SERIES - MOUNTING TYPE H CRIMP TYPE - Cr

## MALE

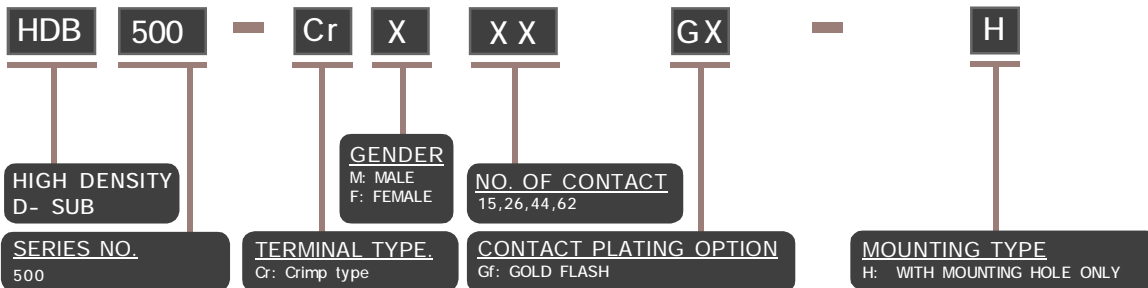


PART NO.	NO. OF CONTACT	DIMENSIONS			
		A	B	C	D
HDB500-CrM15-H	15	16.92	24.99	30.61	19.28
HDB500-CrM26-H	26	25.25	33.32	39.14	27.51
HDB500-CrM44-H	44	36.96	47.04	53.04	41.30
HDB500-CrM62-H	62	55.42	63.50	69.32	57.71

## FEMALE



PART NO.	NO. OF CONTACT	DIMENSIONS			
		A	B	C	D
HDB500-CrF15-H	15	16.33	24.99	30.61	19.28
HDB500-CrF26-H	26	24.66	33.32	39.14	27.51
HDB500-CrF44-H	44	38.38	47.04	53.04	41.30
HDB500-CrF62-H	62	54.84	63.50	69.32	57.71



### ELECTRICAL CHARACTERISTIC

CONTACT CURRENT RATING: 5 AMP  
 CONTACT RESISTANCE: 15 M OHM MAX.  
 INSULATION RESISTANCE: 5000 OHM MIN. AT 500V DC  
 DIELECTRIC WITHSTANDING VOLTAGE: AC 1000V / MIN. R.M.S  
 OPERATING TEMPERATURE:-55°C~ +105°C

### MATERIALS

INSULATOR: P.B.T. UL 94V-0 RATED  
 SHELL: STEEL; TIN PLATING

NOTE : SOME SIZES, STYLES AND OPTION ARE NON-STANDARD, NON-CANCELLABLE, NON-RETURNABLE