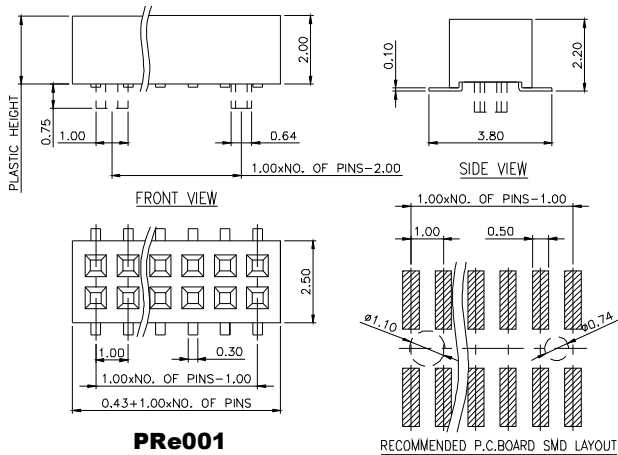


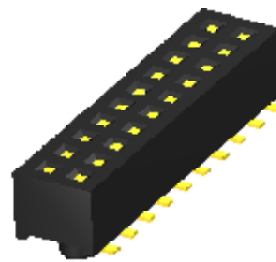
MMI

PIN RECEPTACLE
PITCH: 1.00x1.00mm

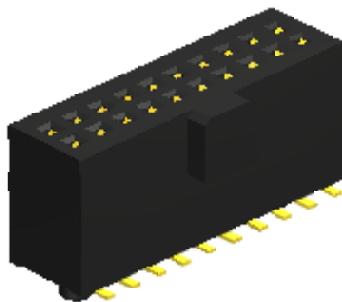
1.00x1.00 mm HEADER RECEPTACLE SURFACE MOUNT TYPE - Pt



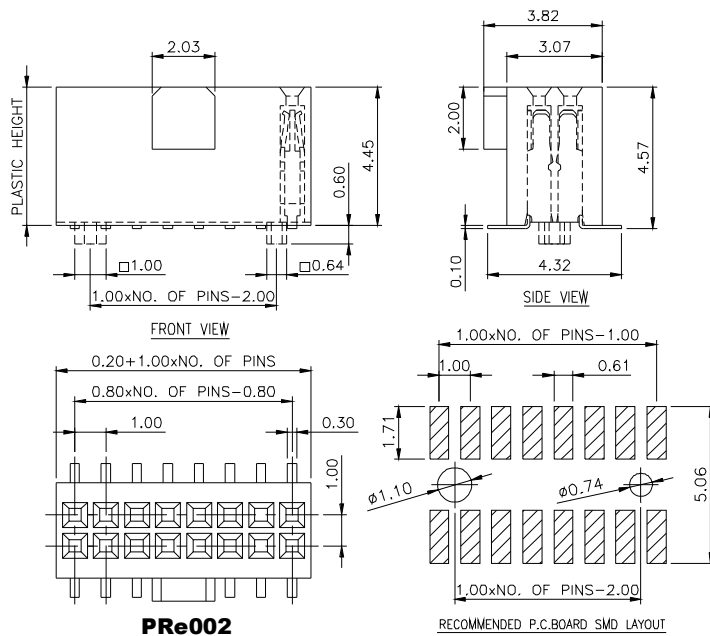
PR001



**2 ROW
SURFACE MOUNT TYPE
PR001**



**2 ROW
SURFACE MOUNT TYPE
PR002**



PR002

PR	e	XXX	-	Pt	##	XX	GX	-	X	XX
HEADER RECEPTACLE	SERIES NO. 001,002			PCB TYPE Pt: SURFACE MOUNT TYPE	NO. OF ROW 02				PEG OPTION P: WITH PEG BLANK: WITHOUT PEG	CAP OPTION CP: WITH CAP BLANK: WITHOUT CAP
PITCH 1.00x1.00 mm					NO. OF PINS PER ROW					
<p>CONTACT PLATING OPTION</p> <p>Gf: GOLD FLASH Gft: GOLD FLASH ON CONTACT, TIN PLATED ON SOLDER TAIL G15t: 15u" GOLD ON CONTACT, TIN PLATED ON SOLDER TAIL G30t: 30u" GOLD ON CONTACT, TIN PLATED ON SOLDER TAIL G50t: 50u" GOLD ON CONTACT, TIN PLATED ON SOLDER TAIL</p>										

SPECIFICATIONS

CURRENT RATING : 1 AMPS.
 INSULATOR RESISTANCE : 5000 OHM MIN.
 CONTACT RESISTANCE: 20m OHM MAX.
 DIELECTRIC WITHSTANDING : AC 500 V.
 OPERATING TEMPERATURE : - 40°C ~ + 105°C
 CONTACT MATERIAL : PHOSPHOR BRONZE

MATERIALS

INSULATOR MATERIAL : LCP
 FINISH : GOLD FLASH

NOTE : SOME SIZES, STYLES AND OPTION ARE NON-STANDARD, NON-CANCELLABLE, NON-RETURNABLE